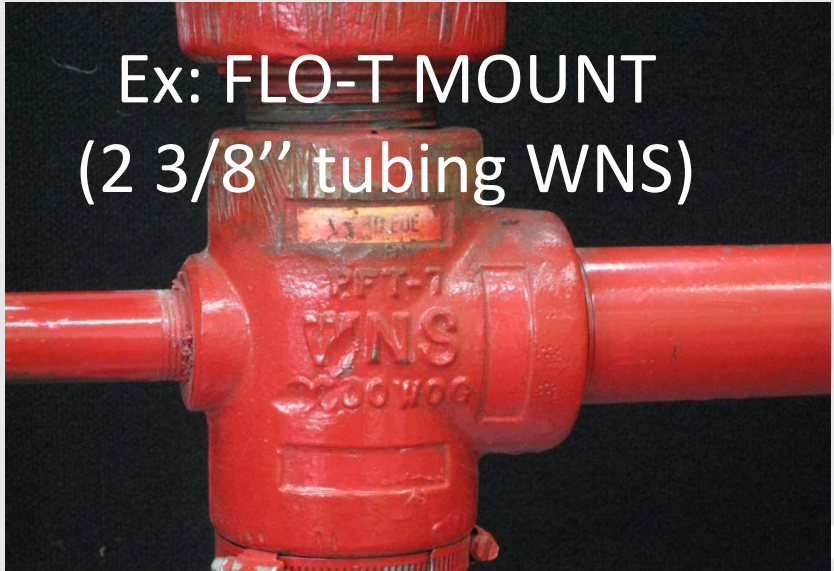




# TITAN<sup>®</sup> ADAPTER

INSTALLATION INSTRUCTIONS

**AD OIL**  
WELLSITE PRODUCTS

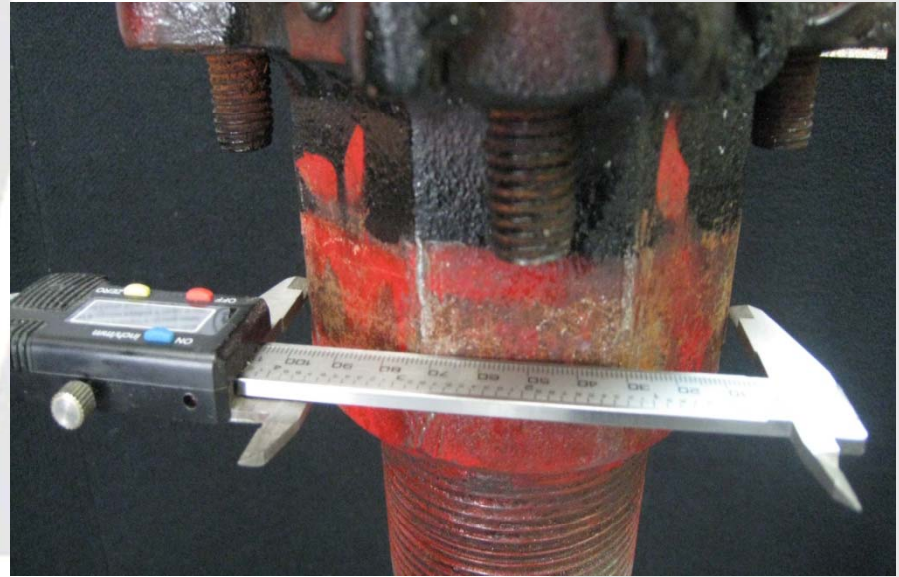


Ex: FLO-T MOUNT  
(2 3/8" tubing WNS)



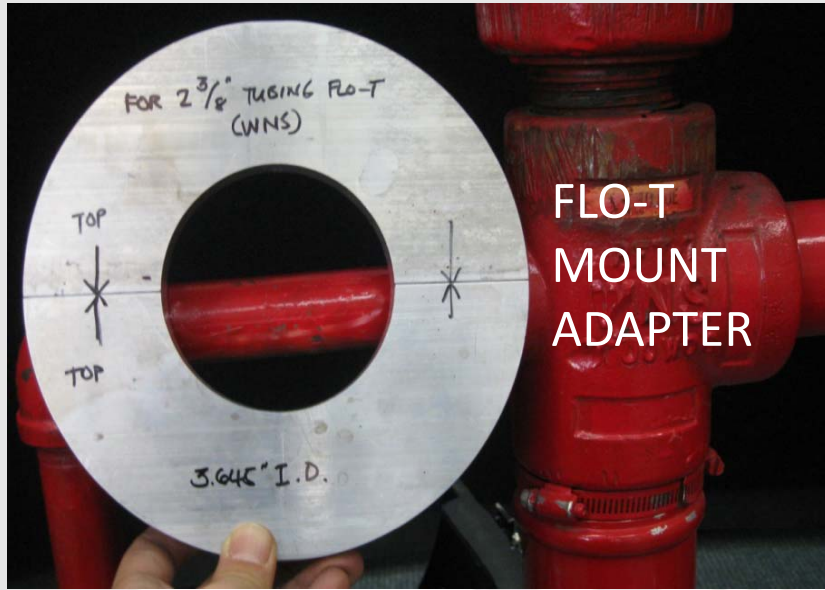
Ex: SINGLE PAC  
OCTAGON BASE  
MOUNT

**ADOIL**  
WELLSITE PRODUCTS



ACCURATELY MEASURE THE SEALING AREA

**AD OIL**  
WELLSITE PRODUCTS



AD OIL  
WELLSITE PRODUCTS



## GENERAL INSTRUCTIONS



SPRAY THE MOUNTING ZONE WITH BRAKE CLEANER THEN USE A SCRAPER OR WIRE BRUSH, WIPE WITH A RAG UNTIL FREE OF DIRT.

SPRAY AGAIN AND LET DRY (DON'T WIPE)



USE A  
3/16  
ALLEN  
WRENCH  
TO SPLIT  
ADAPTER

PERFORM A DRY  
TRIAL FIT ON THE  
MOUNTING ZONE  
AND MARK THE  
LOCATION OF THE  
"SPLIT"

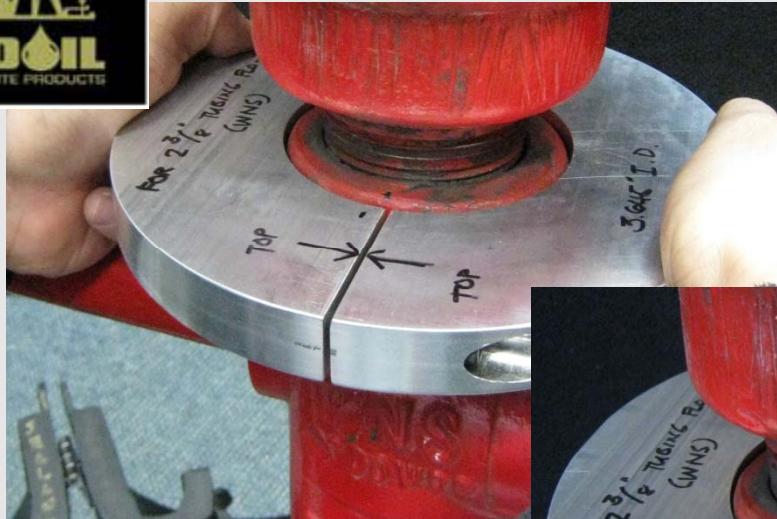




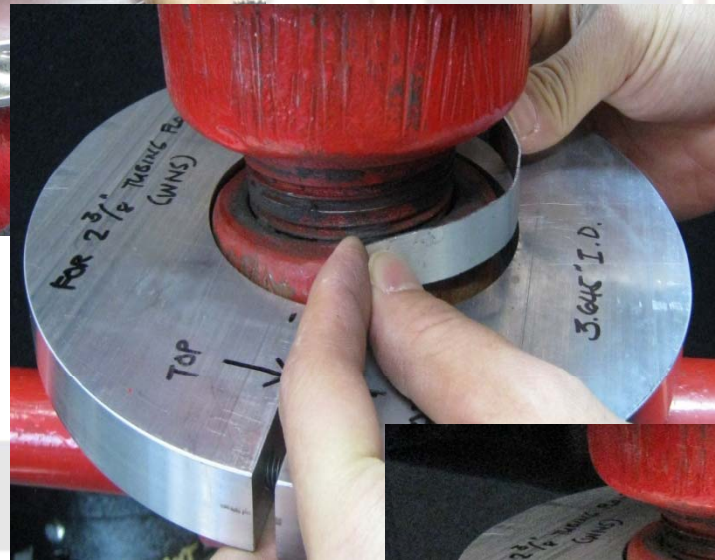
APPLY HI-TEMP SEALANT ON ALL JOINING EDGES



**WELLSITE PRODUCTS**

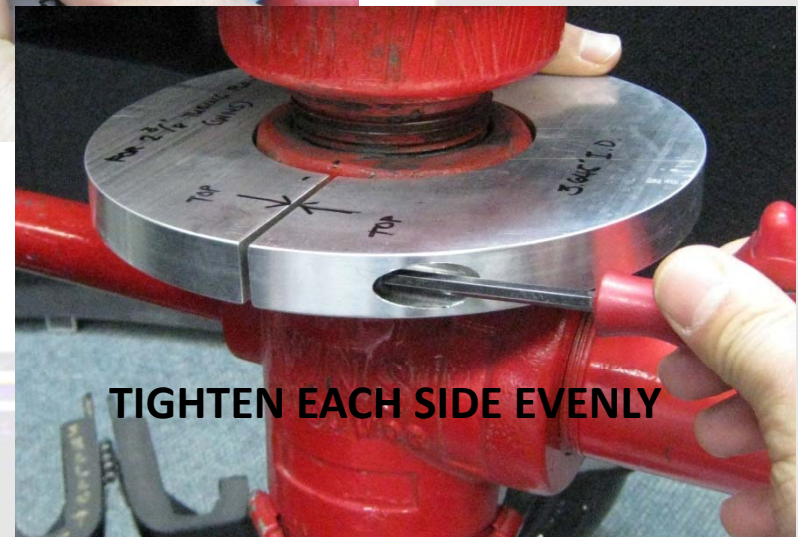


ATTACH THE ADAPTER TO  
THE MOUNTING ZONE



USE SHIM  
ONLY IF REQUIRED

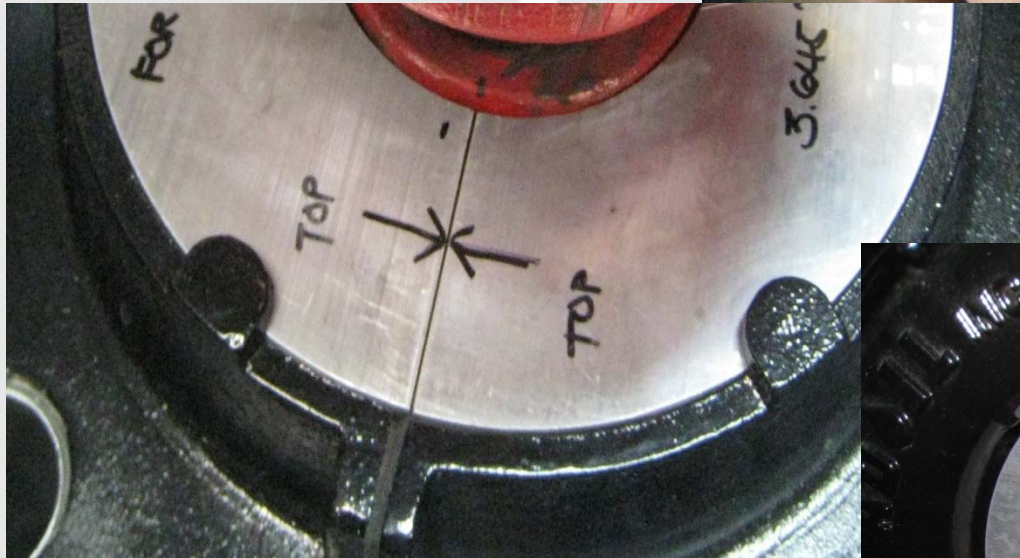
**NOTE:** STUFFING BOX DIAMETERS  
OFTEN VARY +/- .075 " .  
ADD SHIM IF ADAPTER IS  
OVERSIZED  
OR MACHINE LATHE I.D. IF  
UNDERSIZED.



TIGHTEN EACH SIDE EVENLY



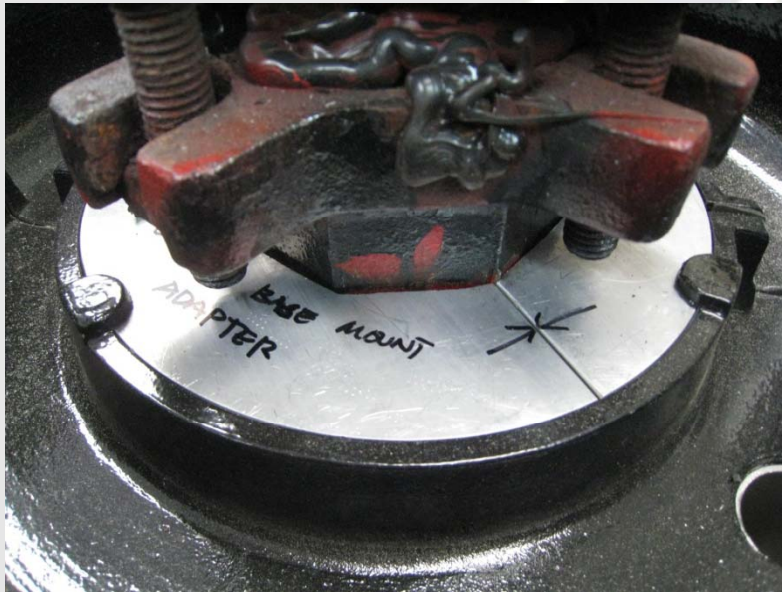
**MOUNT THE BASIN  
TO THE ADAPTER**



**AD OIL  
WELLSITE**



## SINGLE PAC OCTAGON BASE MOUNT



**ATTACH THE PROVIDED CLAMP  
UNDER THE ADAPTOR  
FOR ADDED STABILITY**



**ALWAYS LEAVE  
SPACE BELOW  
BOLTS FOR  
FUTURE PACKING  
ADJUSTMENTS**

**ADOIL  
WELLSITE**



WELLSITE

DUCTS



*WALKIN'* THE TALK  
ON GROUNDWATER PROTECTION...

**(403) 242-2201 [www.adoil.net](http://www.adoil.net)**

**ADOIL**  
WELLSITE PRODUCTS